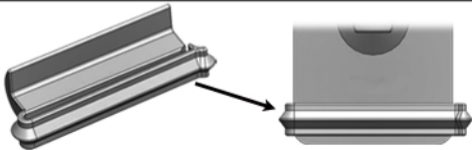

Slatwall Clip

Instructions For Use



Hook the clip into your slatwall system, just to the left of the hanger. Then, gently pull the lip open on the right edge of the clip, and slide it over the hanger plate. Make sure that the lip has locked in place securely around the right edge of the plate. *(This clip allows for movement of the plate, without allowing it to lift off your slatwall when the display item is removed.)*