



1-866-443-6623  
www.holdupdisplays.com

**HDSW24  
HDSW23  
HDSW22  
Slatwall Rail**

Due to material process changes our aluminum extrusions may be shipped with coated or raw ends. End caps or your own trim are recommended. Furthermore, design updates in certain high capacity displays have eliminated the need for previously included connector plates and they are no longer included with each extrusion. If you are unable to install with staggered seams, or within 7 inches from an end to the nearest stud, please call 866-443-6623.



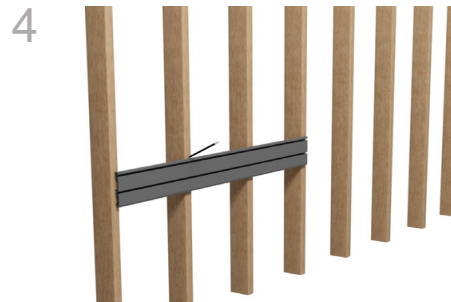
Rails will be nested back-to-back for safe shipping. Be sure to separate before assembling. (It may be necessary to use a screwdriver to separate rails)



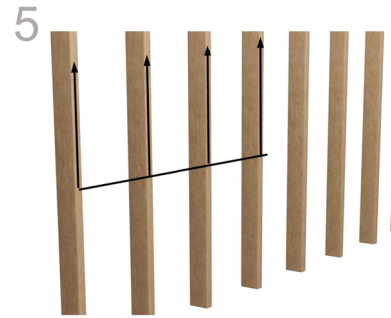
Choose a location and height for your display taking into consideration clearance required to add and remove firearms from racks. Begin installation with the lowest row of rails.



Hold rail against wall with the stacking tab down as shown above. Check level and draw a line along the top of the rail.



Using your preferred method, locate and mark every stud along the line.  
**NOTE: Studs must be within 7' from the end of the rail.**



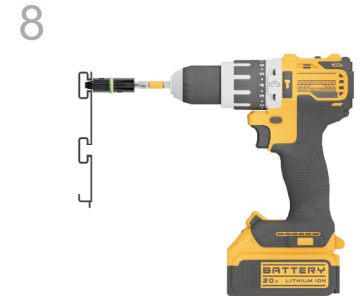
Extend lines vertically to the full height of the display and recheck stud alignment.



Insert mounting screw into screw guide.



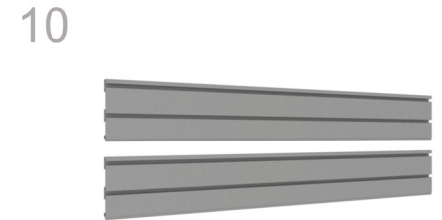
The mounting screws included are self-drilling. The screw itself will drill the hole it requires.



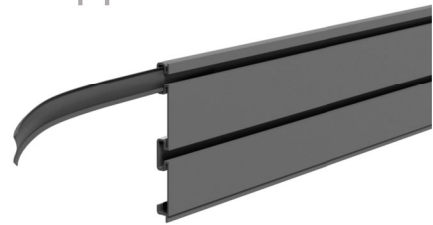
Place screw guide into channel at stud location. Firmly press both guide and drill towards rail and drive screw through channel into stud.



Check level and drive screws at each stud location in both the top and bottom channels.



Mark and attach with screws each additional row to complete display.



Insert screw cover strip from end of rail if accessible, otherwise press into slot with pen or marker.

#### Components:

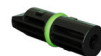
#### SKU:

#### Description:



HDSW24 or  
HDSW23 or  
HDSW22

Slatwall Panels



HD42

Screw Guide Kit



8X2" Self Drilling Screw

Mounting Screw



Insert strip

Screw cover vinyl insert



Phillips Bit

Phillips Bit

#### Optional, sold separately



Remove paper backing from white adhesive square. Place face down on rail as shown. Remove paper backing from second side and align end cap for desired finish



Press end cap firmly against rail for maximum bond strength. (Adhesive bonds instantly so you have one chance)

#### Optional, sold separately



White Adhesive  
Square

Adhesive Square

1 Sheets of 6



HDSW2EC

End Cap

2/rail