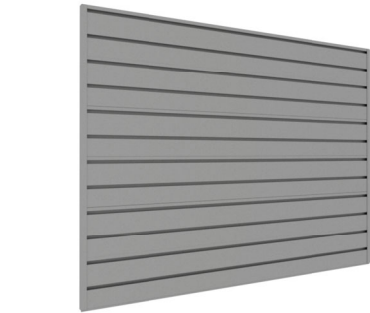




1-866-443-6623
www.holdupdisplays.com

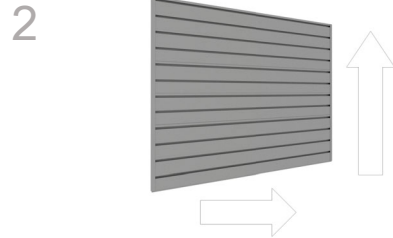
HDSW2-3X4 6 Piece Gun Wall



Due to material process changes our aluminum extrusions may be shipped with coated or raw ends. End caps or your own trim are recommended. Furthermore, design updates in certain high capacity displays have eliminated the need for previously included connector plates and they are no longer included with each extrusion. If you are unable to install with staggered seams, or within 7 inches from an end to the nearest stud, please call 866-443-6623.



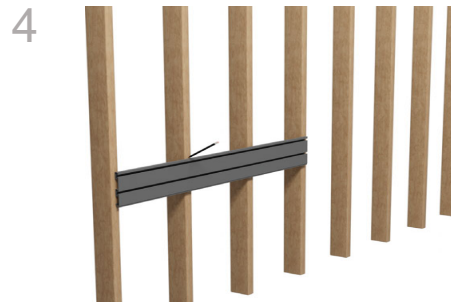
Rails will be nested back-to-back for safe shipping. Be sure to separate before assembling. (It may be necessary to use a screwdriver to separate rails)



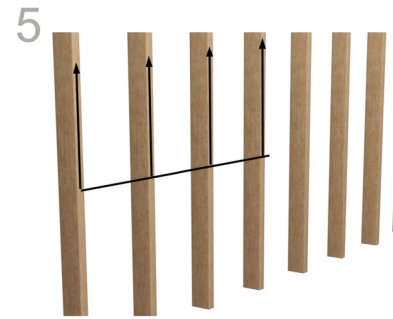
Choose a location and height for your 4'W X 3'H display, taking into consideration clearance required to add and remove firearms from racks. Begin installation with the lowest row of rails.



Hold rail against wall with the stacking tab down as shown above. Check level and draw a line along the top of the rail.



Using your preferred method, locate and mark every stud along the line.
NOTE: Studs must be within 7' from the end of the rail.



Extend lines vertically to the full height of the display and recheck stud alignment.



Insert mounting screw into screw guide.



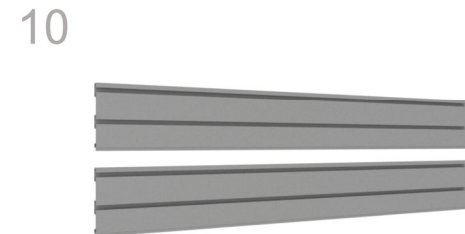
The mounting screws included are self-drilling. The screw itself will drill the hole it requires.



Place screw guide into channel at stud location. Firmly press both guide and drill towards rail and drive screw through channel into stud. **Note: Mount screws into studs within 7" of end of rail on each side**

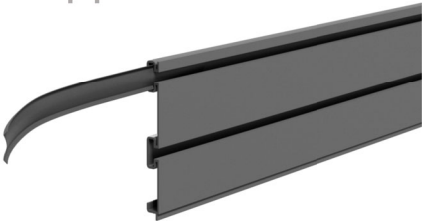


Check level and drive screws at each stud location in both the top and bottom channels.



Mark and attach with screws each additional row to complete wall.

11



Insert screw cover strip from end of rail if accessible, otherwise press into slot with pen or marker.

12


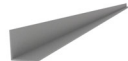







Remove paper backing from white adhesive square. Place face down on rail as shown. Remove paper backing from second side and align end cap for desired finish

13



Press end cap firmly against rail for maximum bond strength. (Adhesive bonds instantly so you have one chance)

Components:	SKU:	Description:	Quantity:
	HDSW24	48" Slatwall Panels	6
	HDSW2EC	End Cap	2
	HD42	Screw Guide Kit	1
	8X2" Self Drilling Screw	Mounting Screw	48
	Insert strip	48" Screw cover vinyl insert	12
	White Adhesive Square	Adhesive Square	2 Sheets of 6
	Phillips Bit	Phillips Bit	1