



1-866-443-6623  
www.holdupdisplays.com

**HDSR  
Hardwood Slatwall  
System**

**\* Please thoroughly read directions before assembling.**



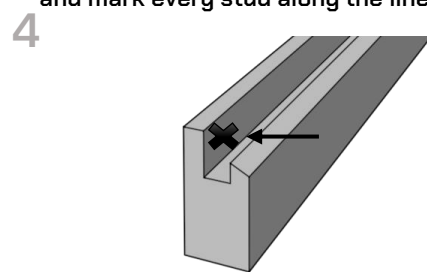
Measure up from floor or down from ceiling for desired height.



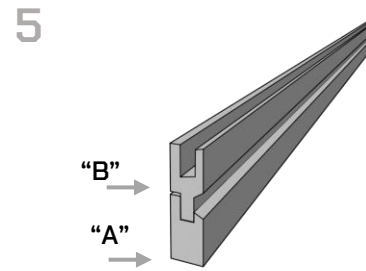
Hold rail against wall, check level and draw a line along the top of the rail. Using your preferred method, locate and mark every stud along the line.



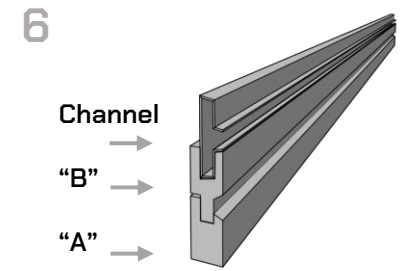
Mark lines vertically to the full height of the display and recheck stud alignment.



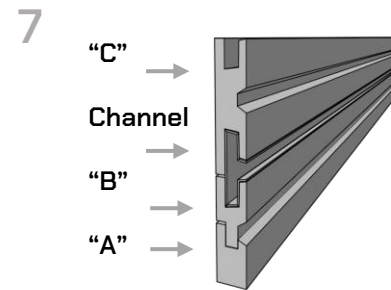
Install Starter base "A" using 1 1/4" Brads or 1 1/2" small finishing nails. Nail or drill through top nailing surface into stud locations.



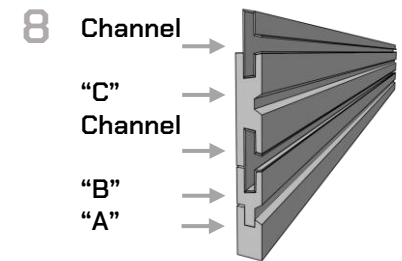
Insert Lower piece "B" into top of Starter Base "A".



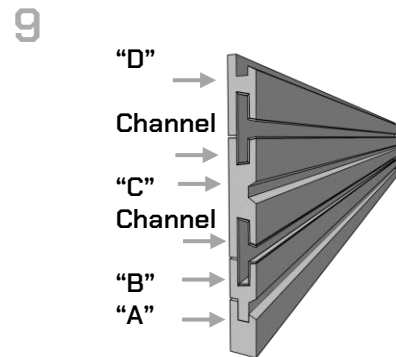
Place aluminum channel into top of piece "B", mark each stud location inside the aluminum channel.



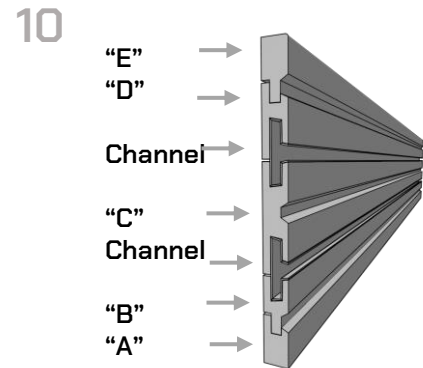
Insert Center piece "C" onto top of Aluminum channel. [ Ensure Part "C" is inserted as shown in the image above.]



Place aluminum channel into top of Center piece "C", mark each stud location inside the aluminum channel. Repeat steps 7 & 8 for every "C" piece ordered.

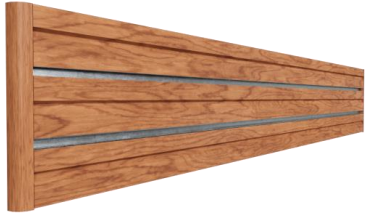


Place Upper piece "D" onto top of metal insert press until tightly together. Nail through upper nailing surface of Part "D" into studs.



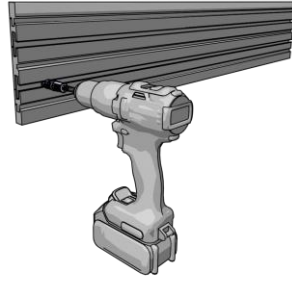
Insert top cap "E" onto upper piece "D". Toenail into top using finishing nails at stud locations as marked in step #2 & #3.

11



Finish ends with end caps provided. Attach using finishing nails.

12



Place screw guide into channel at stud location. Firmly press both guide and drill against rail and drive screw through channel into stud.

**Parts List:**

**A Starter Base**

**B Lower Piece**

**C Center Piece**

**D Upper Piece**

**E Top Cap**

**Aluminum Channels**

**Self Drilling Screws**

**Screwguide**

**End Caps**

**IMPORTANT NOTES:**

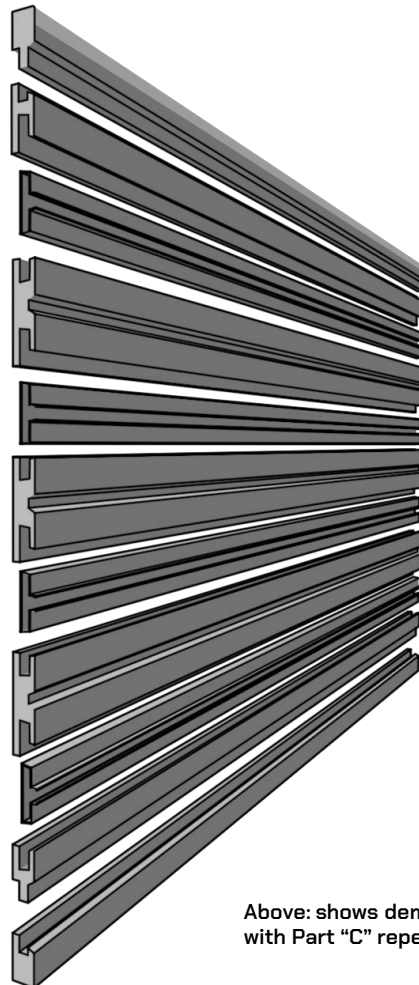
When installing over 8' rail, it is recommended that you stagger all part lengths to prevent joints from lining up from part to part.

Example: For a 13' rail begin with 8' & 5' of part #A, then install 5' & 8' of part #B, continue staggering lengths until complete.

Be sure stud locations are marked on wall behind your project.

Part "C" may need to repeat depending on size of the wall.

There is no need to pre-drill. The screw provided is a self drilling screw and will create the hole it requires.



Above: shows demonstration of display with Part "C" repeating.