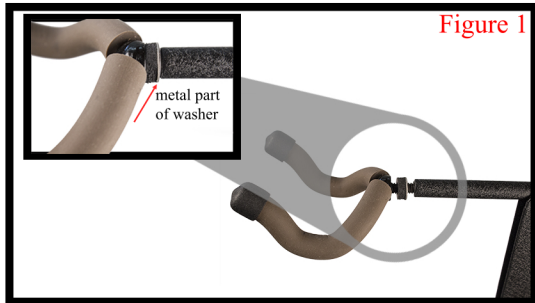


HD86

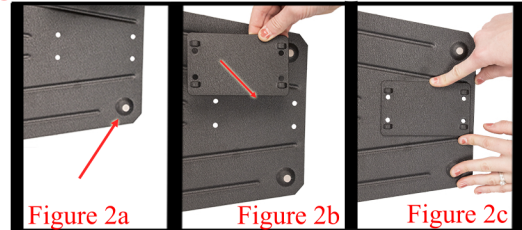
Assembly Instructions

Please follow directions by the numbers!

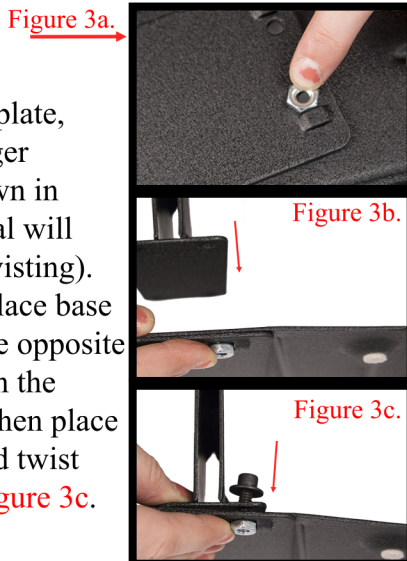
1. Attach yoke to head of unit with washer in between and with metal part of washer facing the back, shown in **Figure 1**. Be sure **not to** over tighten. Cradle should still be able to swivel.



2. Place the felt feet on the outward protruding 4 corner feet of the base plate (**Figure 2a**). (The side that has the felt feet is the side that will face the floor.) Take the two metal plates and put on top of each other, as shown in **Figure 2b and 2c**.



3. On smaller rectangle plate, hold the nut with one finger against raised metal, shown in **Figure 3a** (the raised metal will soon hold the nut from twisting). As shown in **Figure 3b**, place base of the upright piece on the opposite side of the floor plate than the smaller rectangle plate. Then place the washer on the bolt and twist into plate, as shown in **Figure 3c**.



4. Use the provided hex wrench to twist the bolts securely the washers, shown in **Figure 4a**. Repeat steps 3 and 4 until all four bolts are screwed into place, as shown in **Figure 4b**.



HOLDUP

DISPLAYS

TOLL FREE: 866-443-6623
WWW.HOLDUPDISPLAYS.COM