

# Item#: HD66-P-3SW

## 2-Pistol Tree - 3" Slatwall Display

### Assembly Instructions

1) Attach the bars into the HDTK: Aluminum Display Track with the t-nut inside the track and the washer between the track and the bar as shown. Once set at desired height, tighten bolt until snug.



2) Place rubber cap on bolt.



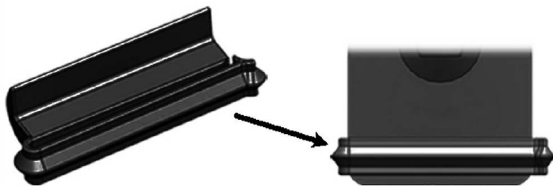
3) Squeeze together open end of base and slide track onto upward pegs.



*Cradles pivot to accommodate different styles.*

## Slatwall Clip:

Instructions For Use



Hook the clip into your slatwall system, just to the left of the hanger. Then, gently pull the lip open on the right edge of the clip, and slide it over the hanger plate. Make sure that the lip has locked in place securely around the right edge of the plate. *(This clip allows for movement of the plate, without allowing it to lift off your slatwall when the items are removed.)*