



HOLDUP DISPLAYS

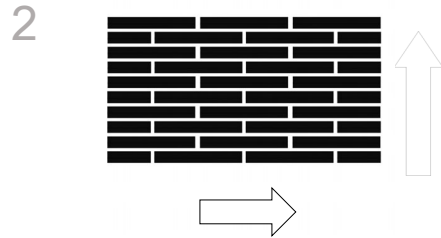
1-866-443-6623
www.holdupdisplays.com

HD112 Tactical Wall Display

Due to material process changes our aluminum extrusions may be shipped with coated or raw ends. End caps or your own trim are recommended. Furthermore, design updates in certain high capacity displays have eliminated the need for previously included connector plates and they are no longer included with each extrusion. If you are unable to install with staggered seams, or within 7 inches from an end to the nearest stud, please call 866-443-6623.



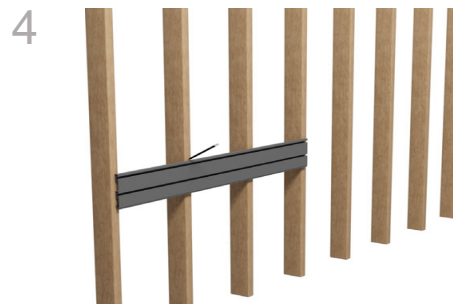
Rails will be nested back-to-back for safe shipping. Be sure to separate before assembling. (It may be necessary to use a screwdriver to separate rails)



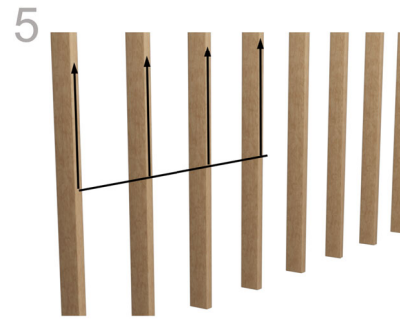
Choose a location and height for your 12' W X 5'H display, taking into consideration clearance required to add and remove firearms from racks. Begin installation with the lowest row of rails.



Hold rail against wall with the stacking tab down as shown above. Check level and draw a line along the top of the rail.



Using your preferred method, locate and mark every stud along the line.
NOTE: Studs must be within 7' from the end of the rail.



Extend lines vertically to the full height of the display and recheck stud alignment.



Insert mounting screw into screw guide.



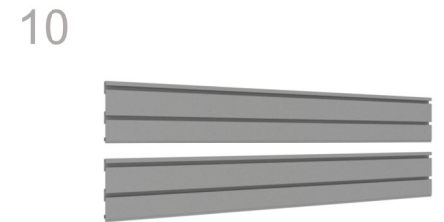
The mounting screws included are self-drilling. The screw itself will drill the hole it requires.



Place screw guide into channel at stud location. Firmly press both guide and drill towards rail and drive screw through channel into stud.

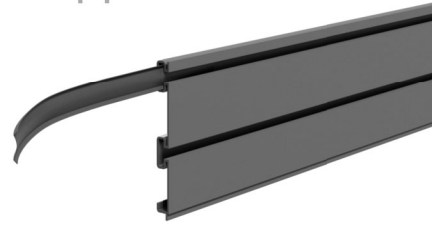


Check level and drive screws at each stud location in both the top and bottom channels.



Mark and attach with screws each additional row to complete wall.

11



Insert screw cover strip from end of rail if accessible, otherwise press into slot with pen or marker.

12



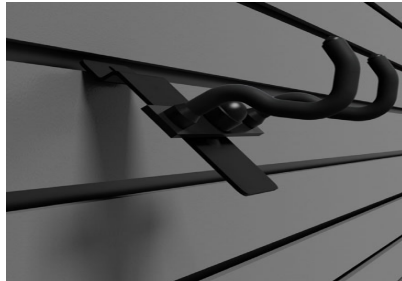
Remove paper backing from white adhesive square. Place face down on rail as shown. Remove paper backing from second side and align end cap for desired finish

13



Press end cap firmly against rail for maximum bond strength. (Adhesive bonds instantly so you have one chance)

14



Tilt fixtures to insert into slatwall channel.

15



Tilt and hook slatwall safety clip into bottom track of the channel on the left side of the hanger. Slide slatwall clip to the right.

Components:

SKU:

Description:

Quantity:



HD09-3SW

Pistol Holder

12



HDSW24

48" Slatwall Panels

25



HDSW22

24" Slatwall Panels

10



HD94-3SW

Magazine Holder

14



HD105-3SW

3-Rifle Rack (pair)

1



HD53-3SW

Vertical 6 Rifle Rack

1



HD75-SW

Heavy Duty Shelf

1



HD46

Slatwall Clip

22



HD42

Screw Guide Kit

1



8X2" Self Drilling Screw

Mounting Screw

240



Insert strip

48" Screw cover vinyl insert

50

24" Screw cover vinyl insert

20



White Adhesive Square

Adhesive Square

4 Sheets of 6



HDSW2EC

End Cap

4