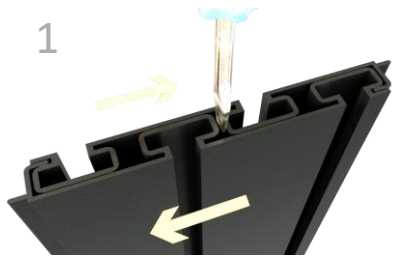




1-866-443-6623
www.holdupdisplays.com

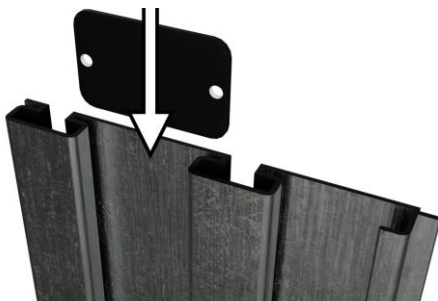
HD112 Tactical Wall Display

1



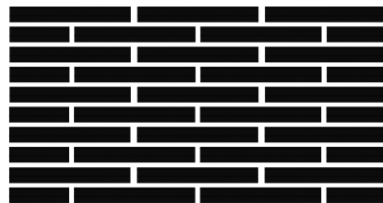
Rails will be nested back-to-back for safe shipping. Be sure to separate before assembling. (It may be necessary to use a screwdriver to separate rails)

3



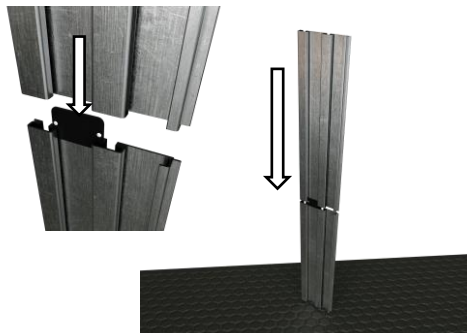
Insert connector plate into back of slatwall.

2



Choose a location and height for your rack taking into consideration clearance required to add and remove firearms from racks.
Begin installation with the lowest row of rails.

4



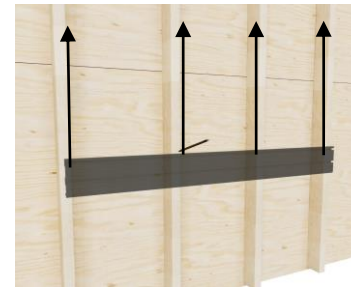
Press rails together. Grasping the top rail, tap rails on a rug or a non-marring surface to close gap.

5



Hold rail against wall with the stacking tab down as shown above. Check level and draw a line along the top of the rail.

7



Mark lines vertically to the full height of the display and recheck stud alignment.

9



Insert mounting screw into screw guide.

6



Using your preferred method, locate and mark every stud along the line.
NOTE: Studs must be within 7" of the end of the rail. When joining rails end to end, if a stud aligns with joint of the two rails, move display 1" left or right.

8



The mounting screws included are self-drilling. The screw itself will drill the hole it requires.

10



Place screw guide into channel at stud location. Firmly press both guide and drill against rail and drive screw through channel into stud.

11



Check level and drive screws at each stud location in both the top and bottom channels.

12



Mark and attach with screws each additional row to complete wall.

13



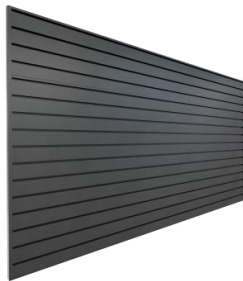
Insert screw cover strip from end of rail if accessible, otherwise press into slot with pen or maker.

14



Remove paper backing from white adhesive square. Place face down on rails as shown. Remove paper backing from second side and align end cap for desired finish

15



Press end cap firmly against rails for maximum bond strength. (Adhesive bonds instantly so you have one chance)

16



Tilt fixtures to insert into slatwall channel.

17



Tilt and hook slatwall clip into channel on the left side of the hanger. Slide slatwall clip to the right.

Components:

SKU:

Description:

Quantity



White Adhesive Square

Adhesive Square

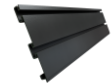
4 Sheets of 6



HDSW24

48" Slatwall Panels

25



HDSW22

24" Slatwall Panels

10



HD75-SW

Heavy Duty Shelf

8



HD53-3SW

Vertical 6 Rifle Rack

4



connectorplate

Connector Plate

35



HD46

Slatwall Clip

22



HD09-3SW

Pistol Holder

12



insert

48" Screw Cover Vinyl Insert

50



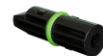
24" Screw Cover Vinyl Insert

20

HDSW2EC

End Cap

4



screwguide

Screw Guide

1



8X2"selfdrillingscrew

Mounting Screw

240



HD94-3SW

Magazine Holder

14



HD105-3SW

3-Rifle Rack (pair)

1