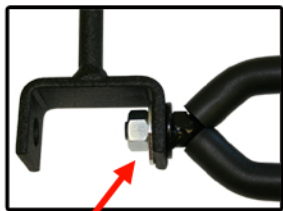




Toll Free: 866-443-6623
www.holdupdisplays.com

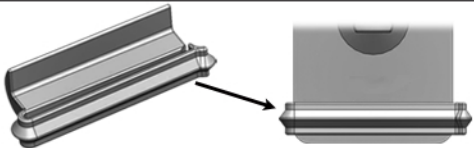
HD11-SW Twin Limb Bow Holder Assembly Instructions



Nuts and washers go on the inside of the twin limb arm bracket.

Angles are adjustable to accommodate different angles of bow limbs.

Slatwall Clip Instructions For Use



Hook the clip into your slatwall system, just to the left of the hanger. Then, gently pull the lip open on the right edge of the clip, and slide it over the hanger plate. Make sure that the lip has locked in place securely around the right edge of the plate. *(This clip allows for movement of the plate, without allowing it to lift off your slatwall when the display item is removed.)*