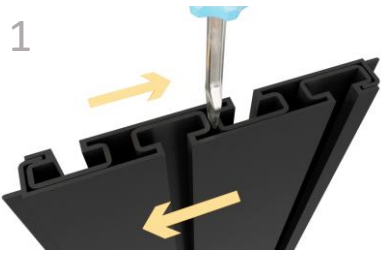




HOLDUP DISPLAYS

1-866-443-6623
www.holdupdisplays.com

HD109 Pistol Wall Bundle



Rails will be nested back-to-back for safe shipping. Be sure to separate before assembling. (It may be necessary to use a screwdriver to separate rails)



Choose a location and height for your rack taking into consideration clearance required to add and remove firearms from racks. Begin installation with the lowest row of rails.



Hold rail against wall with the stacking tab down as shown above. Check level and draw a line along the top of the rail.



Using your preferred method, locate and mark every stud along the line.
NOTE: Studs must be within 7" of the end of the rail. When joining rails end to end if a stud aligns with joint of the two rails, move display 1" left or right.



Mark lines vertically to the full height of the 36" display and recheck stud alignment.



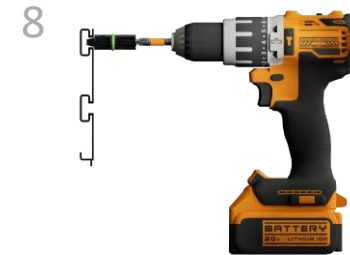
The mounting screws included are self-drilling. The screw itself will drill the hole it requires.



Check level and drive screws at each stud location in both the top and bottom channels.



Insert mounting screw into screw guide.



Place screw guide into channel at stud location. Firmly press both guide and drill towards rail and drive screw through channel into stud.



Mark and attach with screws each additional row to complete wall.

11



Insert screw cover strip from end of rail if accessible, otherwise press into slot with pen or marker

12



Remove paper backing from white adhesive square. Place face down on rails as shown. Remove paper backing from second side and align end cap for desired finish.

13



Press end cap firmly against rails for maximum bond strength. (Adhesive bonds instantly so you have one chance)

14



Tilt fixtures to insert into slatwall channel.

What's in the box:

SKU:

Description:

Quantity:



HD09-3SW

Pistol Holder

16



HDSW24

48" Slatwall Panels

6



HD94-3SW

Magazine Holder

4



HD75-SW

Heavy Duty Shelf

1



HDSW2EC

End Cap

2



insert

48" Screw Cover Vinyl Insert

12



HD46

Slatwall Clip

16



HD42

Screw Guide Kit

1



8X2"selfdrillingscrew

Mounting Screw

48



White Adhesive Square

Adhesive Square

2 Sheets of 6



connectorplate

Connector Plate

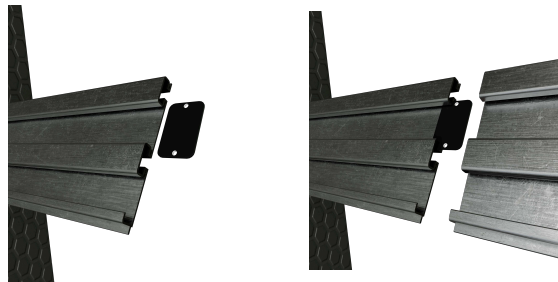
6

16



Tilt and hook slatwall clip into channel on the left side of the hanger. Slide slatwall clip to the right.

***Note:** The connector plate is **ONLY** needed if joining rail end-to-end to connect to an existing gun wall.



Insert connector plate into back of slatwall. Press rails together.