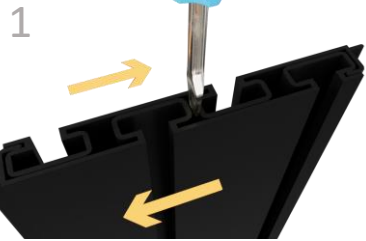




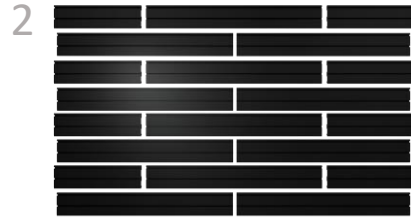
# HOLDUP DISPLAYS

1-866-443-6623  
www.holdupdisplays.com

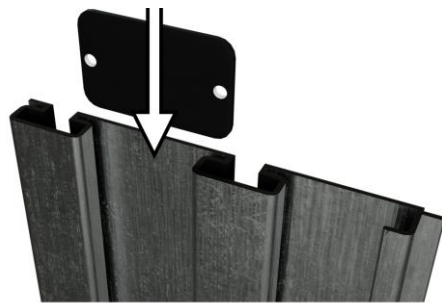
## HD107 Tactical Wall Display



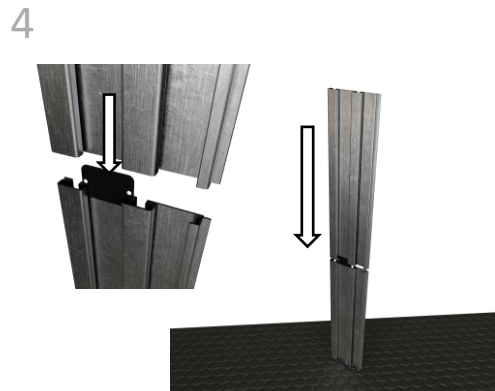
Rails will be nested back-to-back for safe shipping. Be sure to separate before assembling. (It may be necessary to use a screwdriver to separate rails)



Choose a location and height for your rack taking into consideration clearance required to add and remove firearms from racks. Begin installation with the lowest row of rails.



Insert connector plate into back of slatwall.



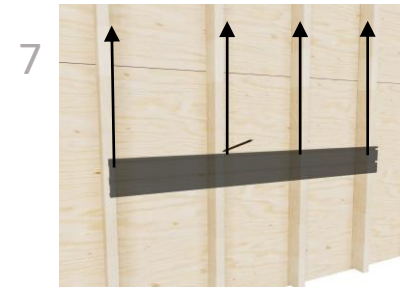
Press rails together. Grasping the top rail, tap rails on a rug or a non-marring surface to close gap.



Hold rail against wall with the stacking tab down as shown above. Check level and draw a line along the top of the rail.



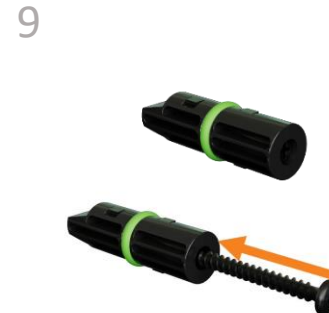
Using your preferred method, locate and mark every stud along the line. **NOTE: Studs must be within 7" of the end of the rail. When joining rails end to end, if a stud aligns with joint of the two rails, move display 1" left or right.**



Mark lines vertically to the full height of the display and recheck stud alignment.



The mounting screws included are self-drilling. The screw itself will drill the hole it requires.



Insert mounting screw into screw guide.



Place screw guide into channel at stud location. Firmly press both guide and drill against rail and drive screw through channel into stud.

11



Check level and drive screws at each stud location in both the top and bottom channels.

12



Mark and attach with screws each additional row to complete wall.

13



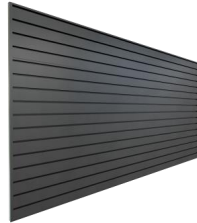
Insert screw cover strip from end of rail is accessible, otherwise press into slot with pen or marker.

14



Remove paper backing from white adhesive square. Place face down on rails as shown. Remove paper backing from second side and align end cap for desired finish.

15



Press end cap firmly against rails for maximum bond strength. (Adhesive bonds instantly so you have one chance)

16



Tilt fixtures to insert into slatwall channel.



Tilt and hook slatwall clip into channel on the left side of the hanger. Slide slatwall clip to the right.

Components:



SKU:	Description:	Quantity
White Adhesive Square	Adhesive Square	2 sheets of 6
HDSW24	48" Slatwall Panels	12
HDSW22	24" Slatwall Panels	8
HD75-SW	Heavy Duty Shelf	2
HD53-3SW	Vertical 6 Rifle Rack	2
connectorplate	Connector Plate	12
HD46	Slatwall Clip	20
HD09-3SW	Pistol Holder	12
insert	48" Screw Cover Vinyl Insert 24" Screw Cover Vinyl Insert	24 16
HDSW2EC	End Cap	2
screwguide	Screw Guide	1
8X2"selfdrillingscrew	Mounting Screw	138
HD04-3SW	Gun/Bow Holder	2
HD94-3SW	Magazine Holder	6